



MONTHLY MEMBERSHIP PROGRESS REPORT

District A 1

Results as of: 5/31/2015

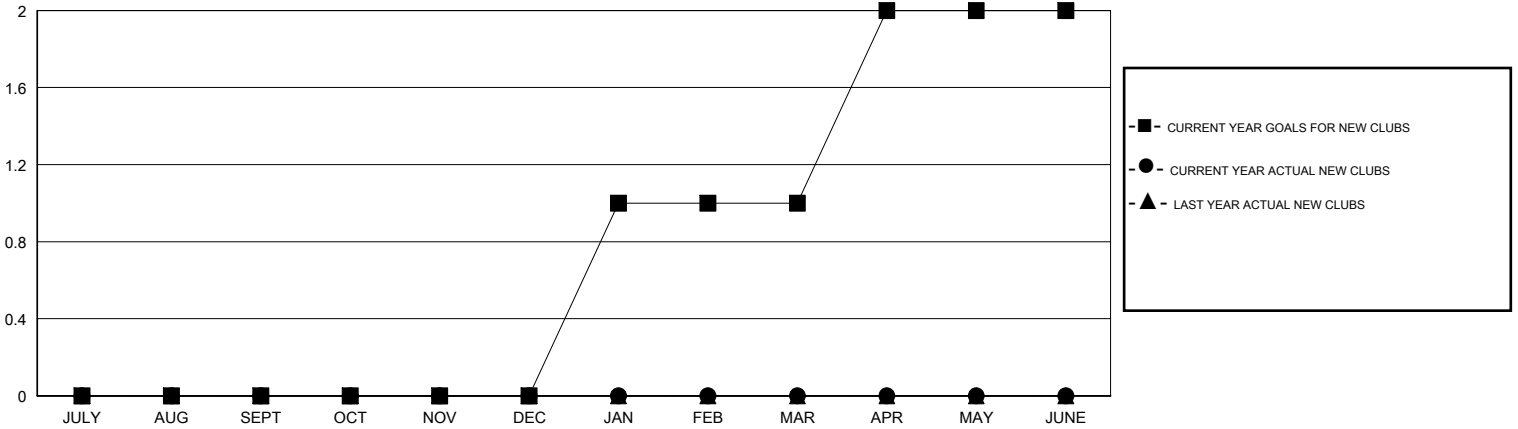
GMT: TERRY GRAHAM

LOCATION ONTARIO

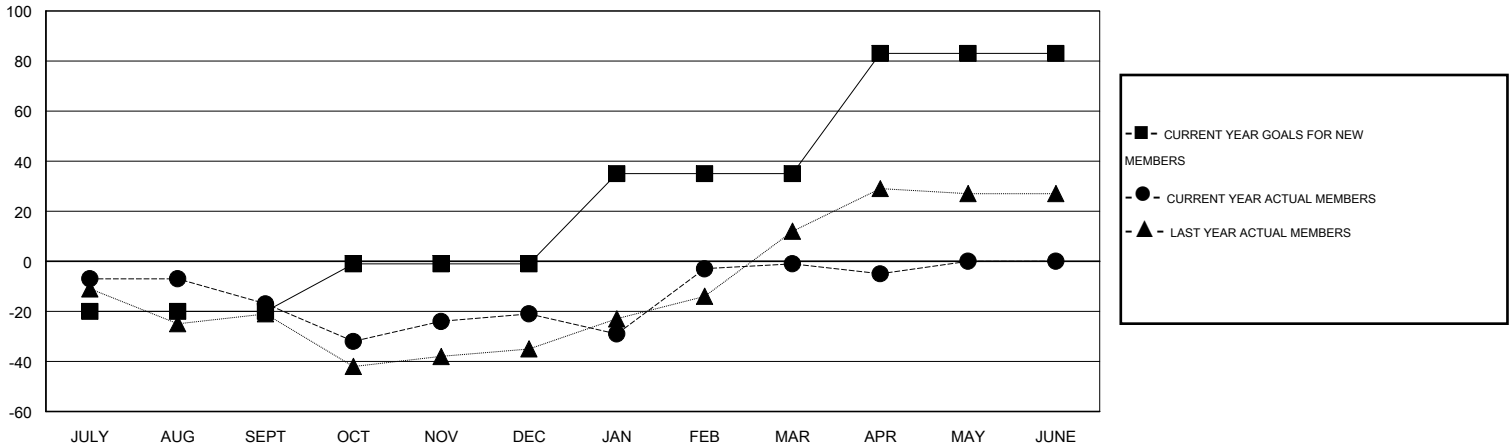
GMT CA 2

Clubs					Members				
RESULTS FOR 2014-2015					RESULTS FOR 2014-2015				
QUARTER	NEW CLUB GOAL	NEW CLUBS	DROPPED CLUBS	NET GAIN/LOSS	QUARTER	NEW MEMBER GOAL	CHARTER AND NEW MEMBERS ADDED	DROPPED MEMBERS	NET GAIN/LOSS
JULY/AUG/SEPT	0	0	0	0	JULY/AUG/SEPT	-20	3	20	-17
OCT/NOV/DEC	0	0	0	0	OCT/NOV/DEC	19	41	45	-4
JAN/FEB/MAR	1	0	0	0	JAN/FEB/MAR	36	47	27	20
APR/MAY/JUNE	1	0	0	0	APR/MAY/JUNE	48	12	11	1

GOALS AND ACTUAL NEW CLUBS CUMULATIVE



GOALS AND ACTUAL MEMBERS CUMULATIVE



DROPPED CLUBS: 0	26 CLUBS OF 44 ADDED 1 OR MORE NEW MEMBERS	<u>GENDER DISTRIBUTION</u>	
<u>DROPPED MEMBERS</u>		MALE	1,028 (81.39%)
DECEASED	16	FEMALE	235 (18.61%)
CLUB CANCELLED	0	<u>FAMILY UNIT MEMBERS</u> 181	
OTHER	87	<u>HEAD OF HOUSEHOLD</u> 89	
TOTAL	103	<u>NON-HEAD OF HOUSEHOLD</u> 92	

[CLICK HERE FOR HEALTH ASSESSMENT DATA](#)